

Metes and Bounds Description of Proposed Lot 8

FROM THE SOUTH WESTERN MOST CORNER OF LOT 503 ON SP190338 IN A NORTH WESTERLY DIRECTION AT A BEARING OF 281 DEGREES 48' 29" FOR A DISTANCE OF 281.994 METRES TO THE POINT OF COMMENCEMENT THENCE

IN A SOUTH WESTERLY DIRECTION AT A BEARING OF 257 DEGREES 59'50" FOR A DISTANCE OF 15 METRES (MORE OR LESS), THENCE IN A NORTH WESTERLY DIRECTION AT A BEARING OF 347 DEGREES 59'50" FOR A DISTANCE OF 32 METRES (MORE OR LESS), THENCE IN A NORTH EASTERLY DIRECTION AT A BEARING OF 77 DEGREES 59'50" FOR A DISTANCE OF 15 METRES (MORE OR LESS), THENCE IN A SOUTH EASTERLY DIRECTION AT A BEARING OF 167 DEGREES 59'50" FOR A DISTANCE OF 32 METRES (MORE OR LESS),

TO THE POINT OF COMMENCEMENT AND CONTAINING AN AREA OF 480 SQUARE METRES (MORE OR LESS).

THERE ARE EARTHWORKS PROPOSED FOR LOT 8

LEGEND

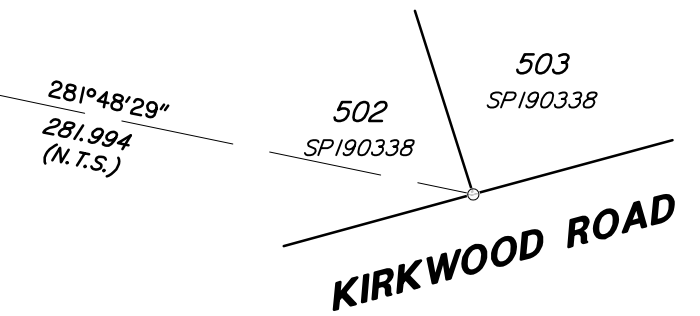
Natural surface contours based on A.H.D. datum at an interval of 0.5m, shown as: --- 1.0 ---

Final surface contours based on A.H.D. datum at an interval of 0.5m, shown as: — 1.0 —

Where applicable, areas to be filled from natural surface are derived from plans by WorleyParsons, and shown as: [stippled pattern]

Concrete Sleeper Retaining Walls shown as: [dashed line pattern]

Boulder Retaining Walls shown as: [circular pattern]



**KIRKWOOD ROAD
STAGE 2
For
PEET**

IMPORTANT NOTES:
(These notes are an integral part of this plan)
This plan has been prepared for PEET & CO for the purposes of a Disclosure Plan Under the Land Sales Act 1984.
It is not to be used by any other person or corporation or for any other purposes and is subject to the following limitations:

The Lot dimensions and area shown hereon are subject to final field survey and also to the requirements of Council and any other authority which may have requirements under any relevant legislation.

Please refer to the approved Development Application for conditions relating to the Lots and to approved Operational Works drawings for services location and possible easements.

The locations of retaining walls shown on this plan are indicative only, see detailed engineering drawings for the dimensions of any structures that may affect the Lot.

Contours shown hereon have been drawn from data supplied by WorleyParsons and survey by Hellbronn & Partners Pty Ltd.

Where final surface contours are not shown, no change to existing surface level is proposed.

THESE DESIGNS AND DRAWINGS ARE COPYRIGHT AND ARE NOT TO BE USED OR REPRODUCED WITHOUT THE WRITTEN PERMISSION OF THG

Data Sources			
Cadastral Boundaries	157800_78.dwg and SP211098		
Design Contours	X_070067_CONTOURS.tin DESIGN FSL		
	w channel (0.5m Intervals)_2010-07-06_THG.dwg		
Natural Surface Contours	X_070067_Contours.tin Ground		
	(0.5 Intervals).dwg		
Engineering Design	X_070067_Design.dwg		

No	Revisions	Date	Chkd
A	Original	8/7/10	EJM

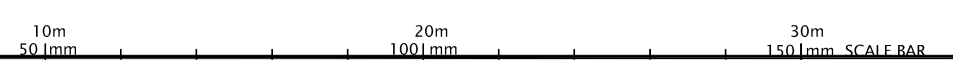
Parish: AUCKLAND
County: CLINTON
Locality: GLADSTONE
Local Authority: GLADSTONE REGIONAL
Horizontal Meridian: MGA Vide SP211098
Vertical Level Datum: AHD
Level Origin: PM95145
Scale: 1:200 @ A3
Surveyed: THG
Drawn: EJM
Checked: EJM
Plot Date: 08 Jul, 2010
Computer File Ref: C4670-Stage2-DP.dwg

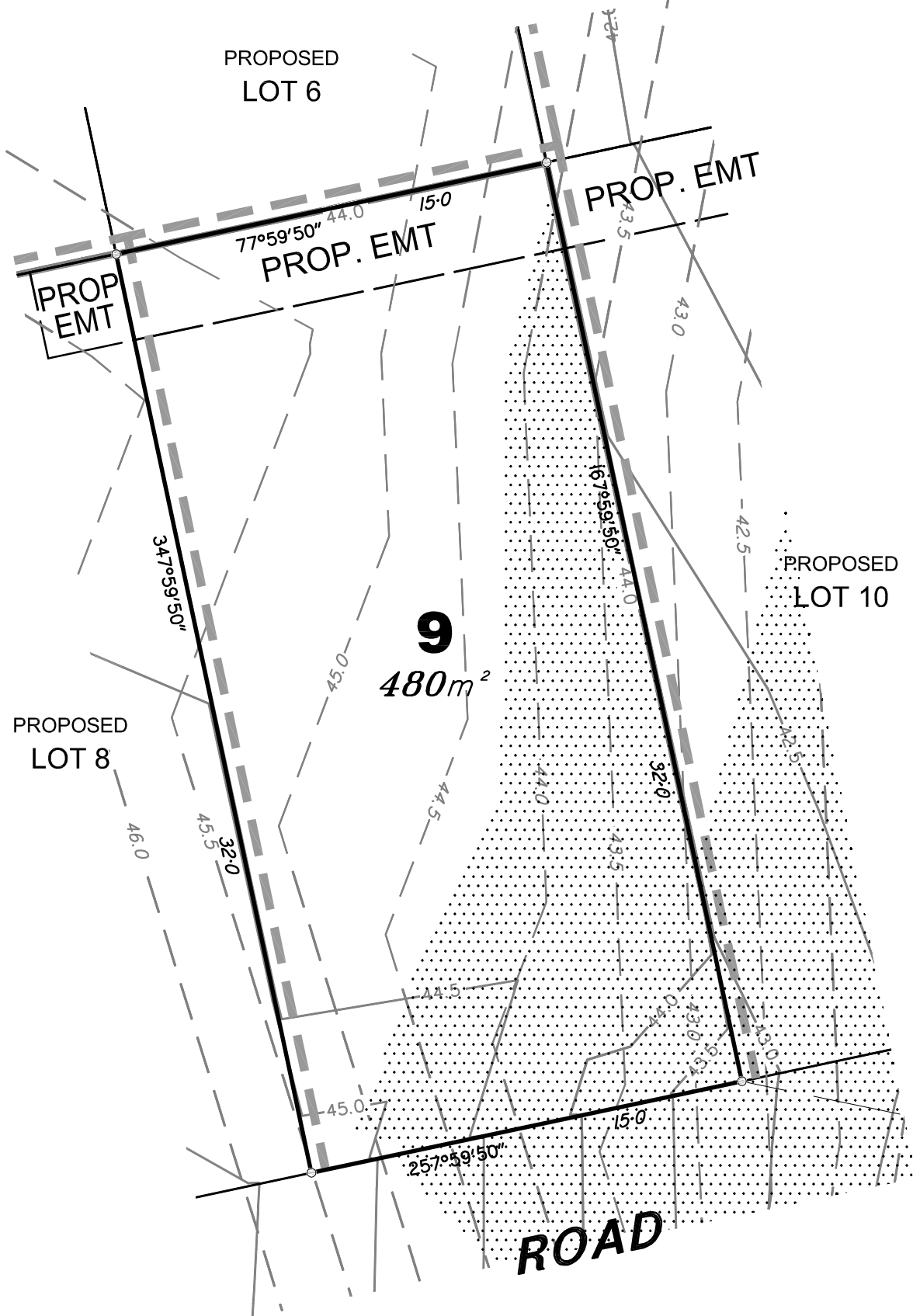
DISCLOSURE PLAN
Plan of Proposed Lot 8
situated on
Lot 502 on SP190338



BRISBANE (07) 3666 4700 GOLD COAST (07) 5574 0588 SAMFORD (07) 3289 1666
Email mail@thg.com.au www.thg.com.au
ABN 58 918 746 490 Hellbronn Partners Pty Ltd trading as THG

Drawing No C4670-DP8 Issue A





Metes and Bounds Description of Proposed Lot 9

FROM THE SOUTH WESTERN MOST CORNER OF LOT 503 ON SP190338 IN A NORTH WESTERLY DIRECTION AT A BEARING OF 283 DEGREES 06' 04" FOR A DISTANCE OF 268.34 METRES TO THE POINT OF COMMENCEMENT THENCE

IN A SOUTH WESTERLY DIRECTION AT A BEARING OF 257 DEGREES 59'50" FOR A DISTANCE OF 15 METRES (MORE OR LESS), THENCE IN A NORTH WESTERLY DIRECTION AT A BEARING OF 347 DEGREES 59'50" FOR A DISTANCE OF 32 METRES (MORE OR LESS), THENCE IN A NORTH EASTERLY DIRECTION AT A BEARING OF 77 DEGREES 59'50" FOR A DISTANCE OF 15 METRES (MORE OR LESS), THENCE IN A SOUTH EASTERLY DIRECTION AT A BEARING OF 167 DEGREES 59'50" FOR A DISTANCE OF 32 METRES (MORE OR LESS),

TO THE POINT OF COMMENCEMENT AND CONTAINING AN AREA OF 480 SQUARE METRES (MORE OR LESS).

THERE ARE EARTHWORKS PROPOSED FOR LOT 9

LEGEND

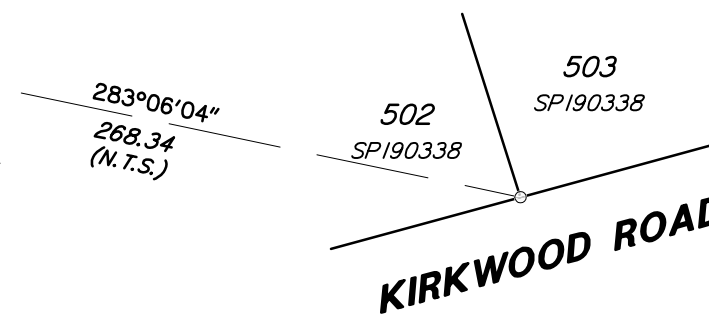
Natural surface contours based on A.H.D. datum at an interval of 0.5m, shown as: 1:0

Final surface contours based on A.H.D. datum at an interval of 0.5m, shown as: 1:0

Where applicable, areas to be filled from natural surface are derived from plans by WorleyParsons, and shown as:-

Concrete Sleeper Retaining Walls shown as:-

Boulder Retaining Walls shown as:-



**KIRKWOOD ROAD
STAGE 2
For
PEET**

IMPORTANT NOTES:
(These notes are an integral part of this plan)
This plan has been prepared for PEET & CO for the purposes of A Disclosure Plan Under the Land Sales Act 1984.
It is not to be used by any other person or corporation or for any other purposes and is subject to the following limitations:

The Lot dimensions and area shown herein are subject to final field survey and also to the requirements of Council and any other authority which may have requirements under any relevant legislation.

Please refer to the approved Development Application for conditions relating to the Lots and to approved Operational Works drawings for services location and possible easements.

The locations of retaining walls shown on this plan are indicative only, see detailed engineering drawings for the dimensions of any structures that may affect the Lot.

Contours shown herein have been drawn from data supplied by WorleyParsons and survey by Hellbronn & Partners Pty Ltd.

Where final surface contours are not shown, no change to existing surface level is proposed.

THESE DESIGNS AND DRAWINGS ARE COPYRIGHT AND ARE NOT TO BE USED OR REPRODUCED WITHOUT THE WRITTEN PERMISSION OF THG

Data Sources			
Cadastral Boundaries	157800_78.dwg and SP211098		
Design Contours	X_070067_CONTOURS.tin DESIGN FSL		
Natural Surface Contours	w channel (0.5m Intervals)_2010-07-06_THG.dwg		
Engineering Design	X_070067_Contours.tin Ground (0.5 Intervals).dwg		
	X_070067_Design.dwg		

No	Revisions	Date	Chkd
A	Original	8/7/10	EJM

Parish: AUCKLAND
County: CLINTON
Locality: GLADSTONE
Local Authority: GLADSTONE REGIONAL
Horizontal Meridian: MGA Vide SP211098
Vertical Level Datum: AHD
Level Origin: PM95145
Scale: 1:200 @ A3
Surveyed: THG
Drawn: EJM
Checked: EJM
Plot Date: 08 Jul, 2010
Computer File Ref: C4670-Stage2-DP.dwg

DISCLOSURE PLAN
Plan of Proposed Lot 9
situated on
Lot 502 on SP190338



BRISBANE (07) 3666 4700 GOLD COAST (07) 5574 0588 SAMFORD (07) 3289 1666
Email mail@thg.com.au www.thg.com.au
ABN 58 918 746 490 Hellbronn Partners Pty Ltd trading as THG

Drawing No **C4670-DP9** Issue **A**

