

This information, as supplied by Capricorn Survey Group, is an accurate representation of the works as constructed and the information is suitable for use by Council and others.

Signed: *[Signature]* Date: 05-05-2011
 Registered Professional Engineer
 Name: Chris Green Registration No. 8777



SEWER LEGEND

— s — SEWER MAIN
 ○ SEWER MANHOLE
 ⊕ SEWER IO

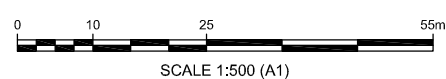
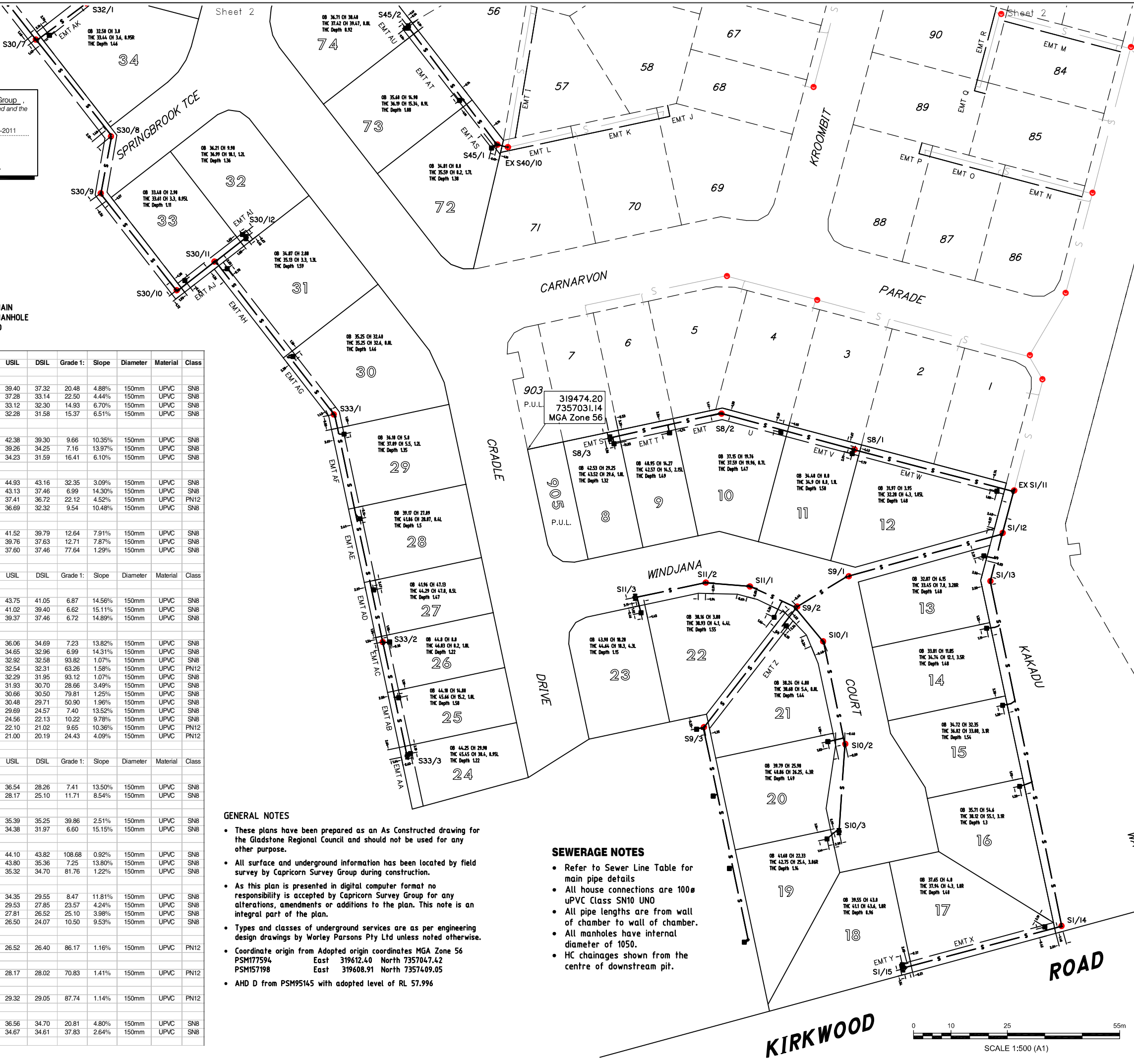
Sewer Mains Number	C.L.	Line	Length	USIL	DSIL	Grade 1:	Slope	Diameter	Material	Class
S1-15	42.50									
S1-14	39.20	S1-15	42.60	39.40	37.32	20.48	4.88%	150mm	UPVC	SN8
S1-13	35.37	S1-14	42.60	37.28	33.14	22.50	4.44%	150mm	UPVC	SN8
S1-12	34.49	S1-13	12.24	33.12	32.30	14.93	6.70%	150mm	UPVC	SN8
S1-11	33.61	S1-12	10.71	32.28	31.58	15.37	6.51%	150mm	UPVC	SN8
S8-3	45.03									
S8-2	41.33	S8-3	29.75	42.38	39.30	9.66	10.35%	150mm	UPVC	SN8
S8-1	36.24	S8-2	35.87	39.26	34.25	7.16	13.97%	150mm	UPVC	SN8
S1-11	33.61	S8-1	43.31	34.23	31.59	16.41	6.10%	150mm	UPVC	SN8
S9-4	46.57									
S9-3	45.50	S9-4	57.26	44.93	43.16	32.35	3.09%	150mm	UPVC	SN8
S9-2	39.34	S9-3	39.65	43.13	37.46	6.99	14.30%	150mm	UPVC	SN8
S9-1	39.10	S9-2	15.26	37.41	36.72	22.12	4.52%	150mm	UPVC	PN12
S1-12	34.49	S9-1	41.68	36.69	32.32	9.54	10.48%	150mm	UPVC	SN8
S10-3	43.44									
S10-2	42.19	S10-3	21.87	41.52	39.79	12.64	7.91%	150mm	UPVC	SN8
S10-1	39.79	S10-2	27.08	39.76	37.63	12.71	7.87%	150mm	UPVC	SN8
S9-2	39.34	S10-1	10.87	37.60	37.46	77.64	1.29%	150mm	UPVC	SN8
S11-3	45.69									
S11-2	43.14	S11-3	18.54	43.75	41.05	6.87	14.56%	150mm	UPVC	SN8
S11-1	40.87	S11-2	10.72	41.02	39.40	6.62	15.11%	150mm	UPVC	SN8
S9-2	39.29	S11-1	12.83	39.37	37.46	6.72	14.89%	150mm	UPVC	SN8
S30-12	38.51									
S30-11	36.63	S30-12	9.91	36.06	34.69	7.23	13.82%	150mm	UPVC	SN8
S30-10	34.54	S30-11	11.81	34.65	32.96	6.99	14.31%	150mm	UPVC	SN8
S30-9	34.83	S30-10	31.90	32.92	32.58	93.82	1.07%	150mm	UPVC	SN8
S30-8	36.74	S30-9	14.55	32.54	32.31	63.26	1.58%	150mm	UPVC	PN12
S30-7	34.22	S30-8	31.66	32.29	31.95	93.12	1.07%	150mm	UPVC	SN8
S30-6	32.75	S30-7	35.25	31.93	30.70	28.66	3.49%	150mm	UPVC	SN8
S30-5	33.69	S30-6	12.77	30.66	30.50	79.81	1.25%	150mm	UPVC	SN8
S30-4	31.74	S30-5	39.19	30.48	29.71	50.90	1.96%	150mm	UPVC	SN8
S30-3	27.24	S30-4	37.87	29.69	24.57	7.40	13.52%	150mm	UPVC	SN8
S30-2	24.25	S30-3	24.84	24.56	22.13	10.22	9.78%	150mm	UPVC	SN8
S30-1	22.93	S30-2	10.42	22.10	21.02	9.65	10.36%	150mm	UPVC	PN12
S20A-2	21.96	S30-1	19.79	21.00	20.19	24.43	4.09%	150mm	UPVC	PN12
S31-2	38.62									
S31-1	30.39	S31-2	61.32	36.54	28.26	7.41	13.50%	150mm	UPVC	SN8
S30-3	27.24	S31-1	35.94	28.17	25.10	11.71	8.54%	150mm	UPVC	SN8
S32-2	37.47									
S32-1	37.14	S32-2	5.58	35.39	35.25	39.86	2.51%	150mm	UPVC	SN8
S30-7	34.22	S32-1	15.91	34.38	31.97	6.60	15.15%	150mm	UPVC	SN8
S33-3	46.58									
S33-2	47.51	S33-3	30.43	44.10	43.82	108.68	0.92%	150mm	UPVC	SN8
S33-1	37.64	S33-2	61.15	43.80	35.36	7.25	13.80%	150mm	UPVC	SN8
S30-11	36.63	S33-1	50.69	35.32	34.70	81.76	1.22%	150mm	UPVC	SN8
S41-4	36.74									
S41-3	31.26	S41-4	40.65	34.35	29.55	8.47	11.81%	150mm	UPVC	SN8
S41-2	29.71	S41-3	39.60	29.53	27.85	23.57	4.24%	150mm	UPVC	SN8
S41-1	28.44	S41-2	32.38	27.81	26.52	25.10	3.98%	150mm	UPVC	SN8
S40-2	26.83	S41-1	25.51	26.50	24.07	10.50	9.53%	150mm	UPVC	SN8
S42-1	29.03									
S40-5	29.06	S42-1	10.34	26.52	26.40	86.17	1.16%	150mm	UPVC	PN12
S43-1	30.75									
S40-6	30.69	S43-1	10.27	28.17	28.02	70.83	1.41%	150mm	UPVC	PN12
S44-1	31.91									
S40-8	31.81	S44-1	23.69	29.32	29.05	87.74	1.14%	150mm	UPVC	PN12
S45-2	38.31									
S45-1	36.64	S45-2	38.71	36.56	34.70	20.81	4.80%	150mm	UPVC	SN8
S40-10	36.52	S45-1	2.27	34.67	34.61	37.83	2.64%	150mm	UPVC	SN8

GENERAL NOTES

- These plans have been prepared as an As Constructed drawing for the Gladstone Regional Council and should not be used for any other purpose.
- All surface and underground information has been located by field survey by Capricorn Survey Group during construction.
- As this plan is presented in digital computer format no responsibility is accepted by Capricorn Survey Group for any alterations, amendments or additions to the plan. This note is an integral part of the plan.
- Types and classes of underground services are as per engineering design drawings by Worley Parsons Pty Ltd unless noted otherwise.
- Coordinate origin from Adopted origin coordinates MGA Zone 56
 PSM177594 East 319612.40 North 7357047.42
 PSM157198 East 319608.91 North 7357409.05
- AHD D from PSM95145 with adopted level of RL 57.996

SEWERAGE NOTES

- Refer to Sewer Line Table for main pipe details
- All house connections are 100mm UPVC Class SN10 UNO
- All pipe lengths are from wall of chamber to wall of chamber.
- All manholes have internal diameter of 1050.
- HC chainages shown from the centre of downstream pit.



CSG
 capricorn survey group
 4/32 Chapple Street
 POBox 490 Gladstone QLD
 4680
 T 07 4972 9144 F 07
 4972 1885
 gladstone@capsurvey.com.au
 A.B.N 59 419 394 233

PRINCIPAL
Peet No 112 Pty Ltd

PROJECT
AS CONSTRUCTED INFORMATION
 VANTAGE ESTATE
 STAGE 2
 Sheet 1 of 2
SEWERAGE LAYOUT

REAL PROPERTY DESCRIPTION
 Lot No: 8-42,72-79,504,905
 Plan: SP233801
 Map Ref.: 9150-32114
 Parish: Auckland
 County: Clinton
 L.A.: Gladstone R. C.
 Locality: New Auckland

REVISIONS	DATE	INITIALS
A- Original Issue	11/2/11	DES
B- Updated HC info	31/3/11	DES

SOURCE DATA SURVEY	FILE REF:	VERSION:
	3353	38
DRAFTING	DATA DISK:	DATE:
	GX	30-01-11
DRAFTING	FILE REF:	DATA DISK:
	G3353-38 sew	Server
DRAFTING	DATE:	
	31-3-11	

SURVEYED: CSG
DRAWN: D.E.S.

QUALITY CH'D:
DATE: 31-3-11

HORIZONTAL
 MGA Zone 56
VERTICAL
 AHD

SCALE
 1:500 @ A1

AUTHORISED BY _____ **DATE** _____

DIRECTOR _____ **REV.** _____

G3353-38 Sewer B

This information, as supplied by Capricorn Survey Group, is an accurate representation of the works as constructed and the information is suitable for use by Council and others.

Signed:  Date: 05-05-2011

Registered Professional Engineer

Name: Chris Green Registration No. 9277.

SEE DIAGRAM A

SEWERAGE NOTES

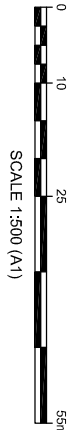
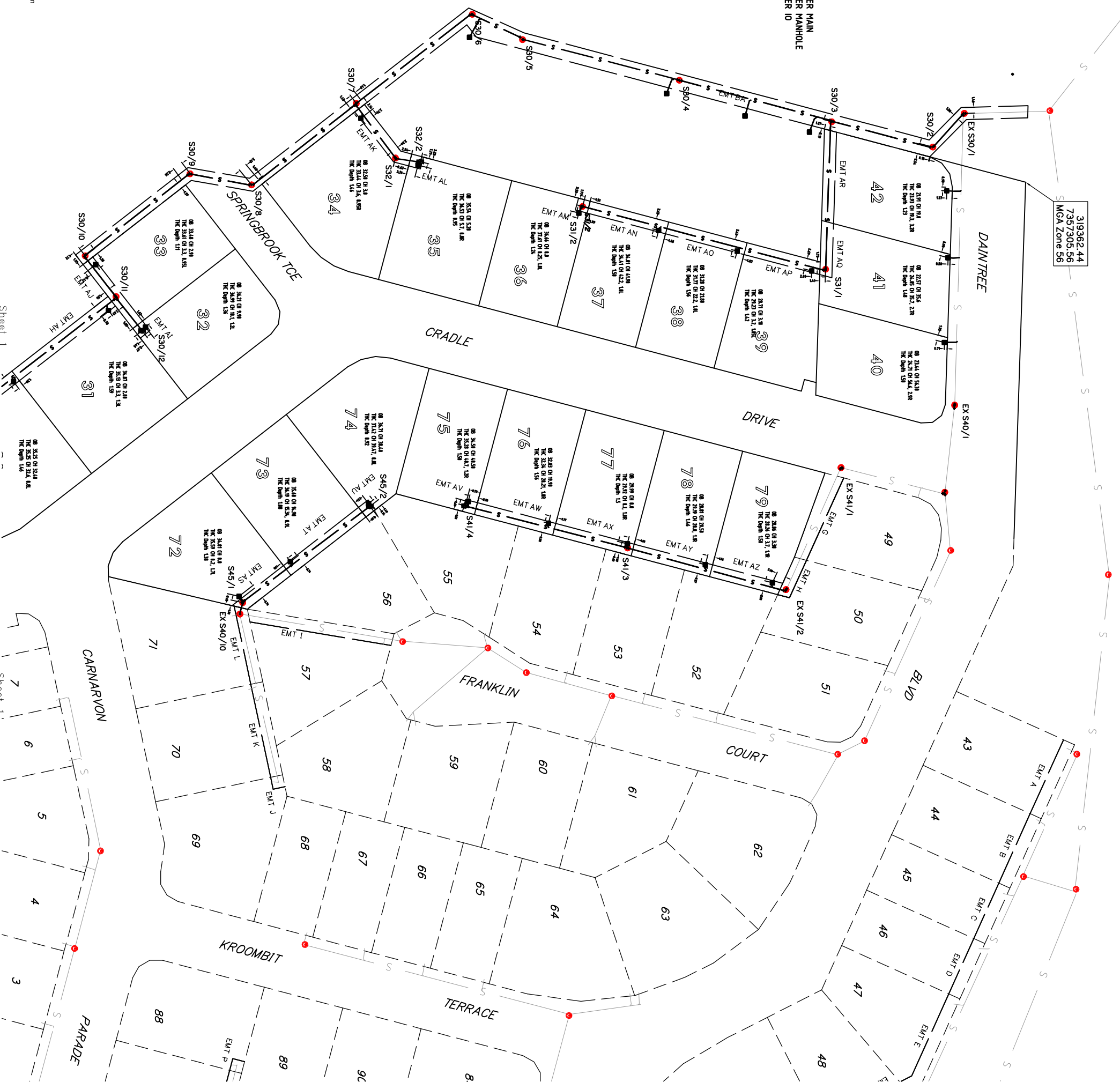
- Refer to Sewer Line Table for main pipe details
- All house connections are 100Ø
- UPVC Class SN10 UNO
- All pipe lengths are from wall of chamber to wall of chamber.
- All manholes have internal diameter of 1050.
- HC changes shown from the centre of downstream pit.

SEWER LEGEND

- S — SEWER MAIN
- SEWER MANHOLE
- SEWER IO

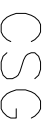
GENERAL NOTES

- These plans have been prepared as an As Constructed drawing for the Gladstone Regional Council and should not be used for any other purpose.
- All surface and underground information has been located by field survey by Capricorn Survey Group during construction.
- As this plan is presented in digital computer format no responsibility is accepted by Capricorn Survey Group for any alterations, amendments or additions to the plan. This note is an integral part of the plan.
- Types and classes of underground services are as per engineering design drawings by Worley Parsons Pty Ltd unless noted otherwise.
- Coordinate origin from Adopted origin coordinates MGA Zone 56
- PSM177594 East 319612.40 North 7357047.42
- PSM157198 East 319608.91 North 7357409.05
- AHD D from PSM95145 with adopted level of RL 57.996



Sheet 1

Sheet 1

 capricorn survey group 4/32 Chapple Street POBox 490 Gladstone QLD 4680 T 07 4972 9144 F 07 4972 1885 gladstone@capricsurvey.com.au A.B.N 59 419 394 233		PRINCIPAL Peet No 112 Pty Ltd		PROJECT AS CONSTRUCTED INFORMATION VANTAGE ESTATE STAGE 2 Sheet 2 of 2 SEWERAGE LAYOUT		REAL PROPERTY DESCRIPTION Lot No: 8-42,72-79,504,905 Plan: SP233801 Map Ref: 9150-32114 Parish: Auckland County: Clinton L.A.: Gladstone R. C. Locality: New Auckland		REVISIONS <table border="1"> <thead> <tr> <th>DATE</th> <th>INT/S</th> </tr> </thead> <tbody> <tr> <td>11/2/11</td> <td>DES</td> </tr> <tr> <td>3/3/11</td> <td>DES</td> </tr> </tbody> </table>		DATE	INT/S	11/2/11	DES	3/3/11	DES	SOURCE DATA <table border="1"> <thead> <tr> <th>FILE REF:</th> <th>VERSION:</th> </tr> </thead> <tbody> <tr> <td>3353</td> <td>38</td> </tr> <tr> <th>DATA DISK:</th> <th>DATE:</th> </tr> <tr> <td>GX</td> <td>30-01-11</td> </tr> <tr> <th>FILE REF:</th> <th>DATE:</th> </tr> <tr> <td>03353-38 sew</td> <td>31-3-11</td> </tr> </tbody> </table>		FILE REF:	VERSION:	3353	38	DATA DISK:	DATE:	GX	30-01-11	FILE REF:	DATE:	03353-38 sew	31-3-11	DRAFTING <table border="1"> <thead> <tr> <th>DATE:</th> </tr> </thead> <tbody> <tr> <td>31-3-11</td> </tr> </tbody> </table>		DATE:	31-3-11	SURVEYED: CSG		DRAWN: D.E.S.		QUALITY CH D:		DATE: 31-3-11		DATUM HORIZONTAL MGA Zone 56 VERTICAL AHD		SCALE 1:500 @ A1		AUTHORISED BY		DATE		DIRECTOR		REV.		JOB NO.		U6555-38 Sewer B	
DATE	INT/S																																																								
11/2/11	DES																																																								
3/3/11	DES																																																								
FILE REF:	VERSION:																																																								
3353	38																																																								
DATA DISK:	DATE:																																																								
GX	30-01-11																																																								
FILE REF:	DATE:																																																								
03353-38 sew	31-3-11																																																								
DATE:																																																									
31-3-11																																																									